

# Update on the Seattle-Tacoma International Airport (Sea-Tac) All Gender Restroom Plan

Port of Seattle Working Group

# PORT OF SEATTLE WORKING GROUP

Representatives from the following:

1. Aviation Operations
2. Aviation Capital Programs
3. Aviation Project Management Group
4. Aviation Maintenance
5. Aviation Facilities and Infrastructure
6. Airport Building Department
7. Aviation Customer Service Department
8. Commission Office
9. Development and Diversity Council
10. Public Affairs
11. Employee Resource Groups (Port-Wide Pride, Transgender Initiative)

# DESIGN

# AIRPORT RESTROOM REQUIREMENTS

- Public spaces have a minimum number of fixtures (toilets, sinks, urinals) that must be available to meet building codes
- Code requires a specific number of fixtures designated male, female, family and ADA
- There may be an opportunity to provide additional fixtures available to all users, regardless of gender identity – after the code minimums have been met

# RESTROOM CRITERIA

- When designing Airport restrooms there are many objectives that the Port is trying to achieve:
  - Accessibility
  - Maintainability
  - Passenger Experience
  - Passenger Throughput (efficiency)
  - Safety & Security
  - Sustainability

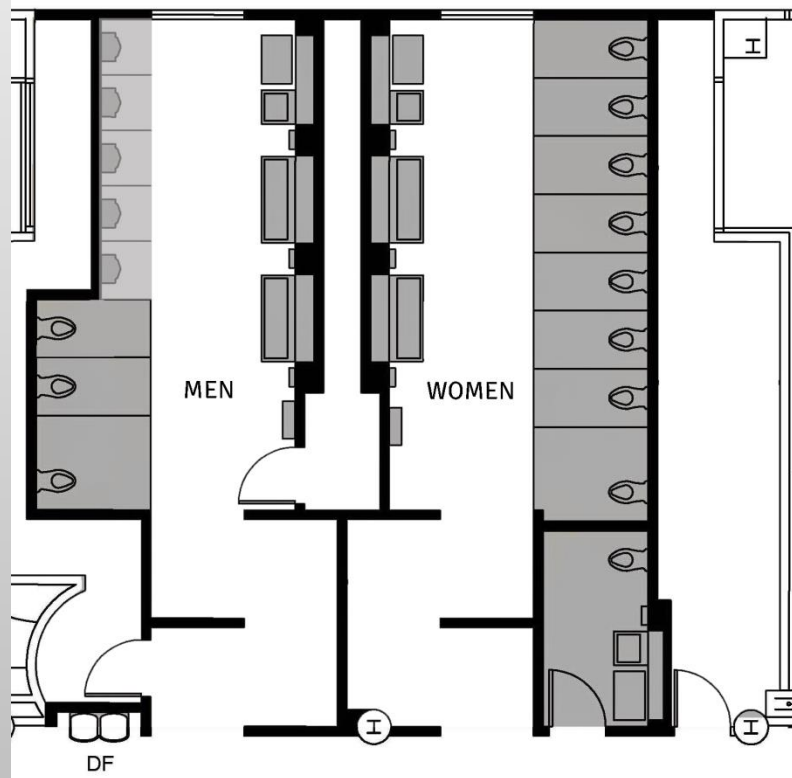
# RESTROOM OPTIONS

## Configurations Explored to Date

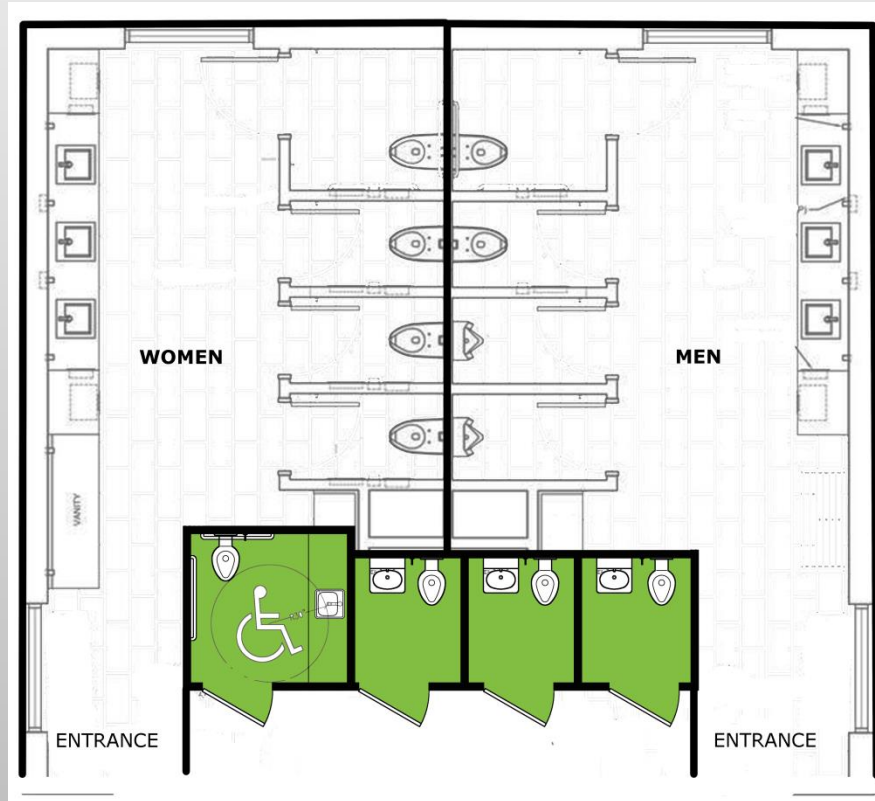
1. Gendered (status quo)
2. Gendered with additional single user restrooms (all gender/family restrooms)
3. Multi-user all gender restrooms: Compartment design
4. Multi-user all gender restrooms: Stalls, urinal room and open washing

***All restroom concepts presented here are for illustrative purposes only. These are not final designs but representative of ways to layout the space.***

# GENDERED RESTROOMS ONLY: STATUS QUO

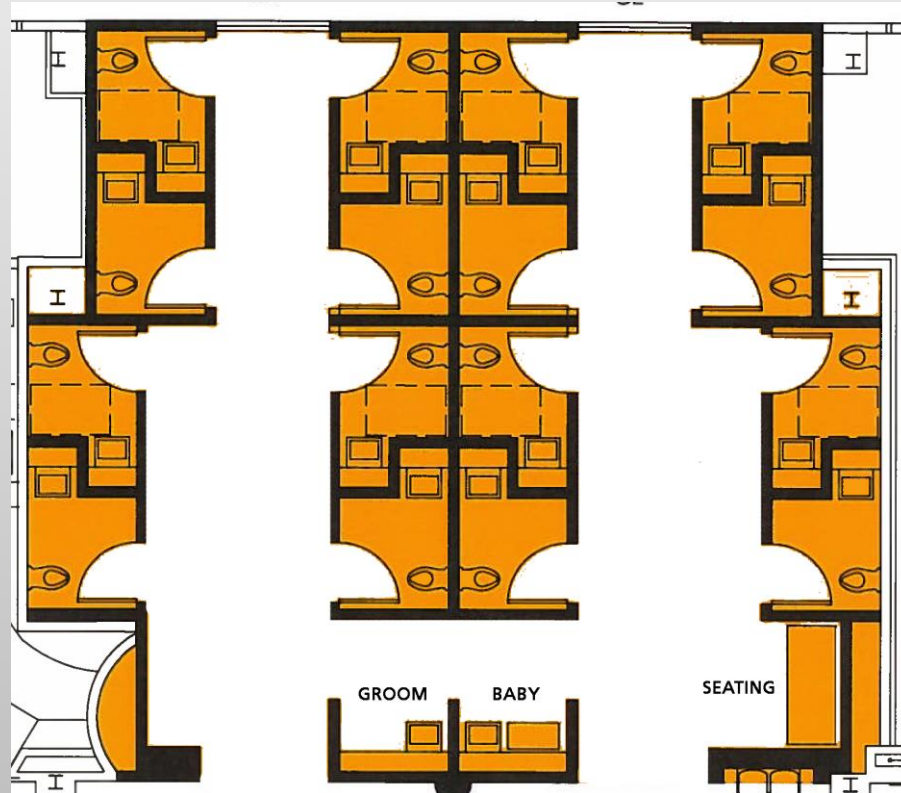


# ADDITIONAL SINGLE OCCUPANT RESTROOMS

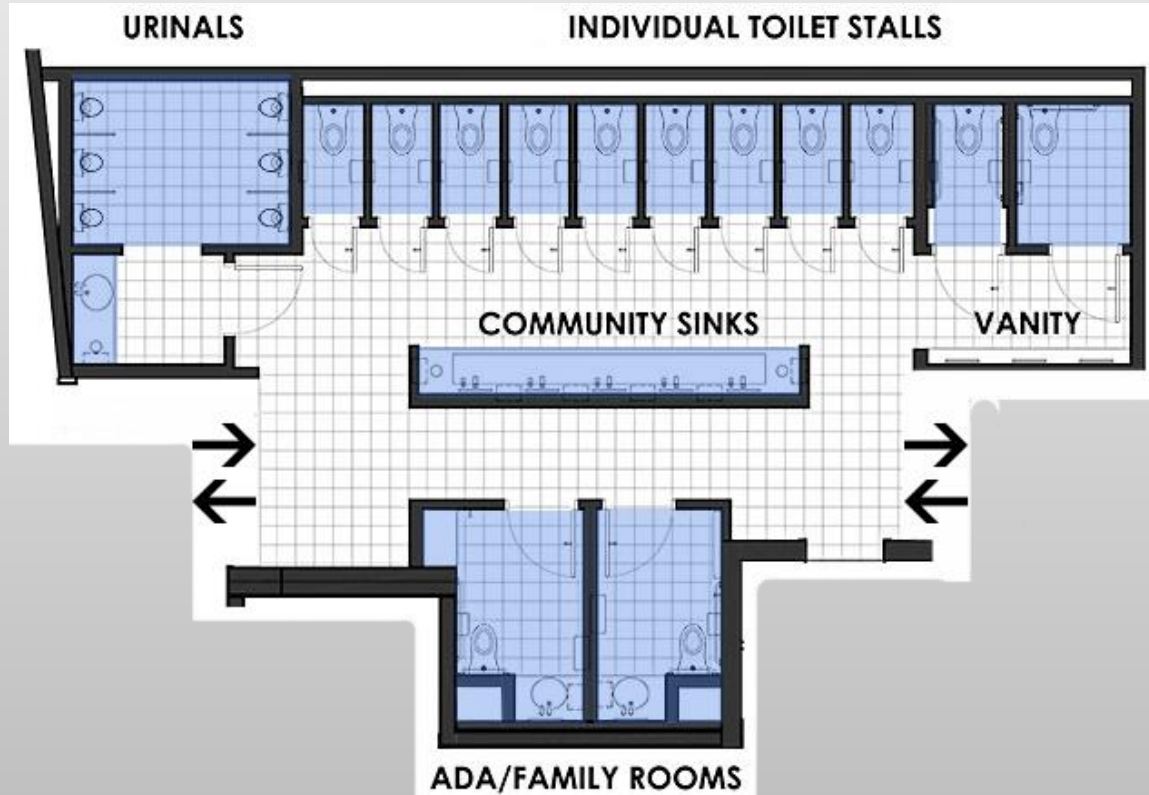




# MULTI-USER ALL GENDER RESTROOM: COMPARTMENT DESIGN



# MULTI-USER ALL GENDER RESTROOM: STALLS, URINAL ROOM AND OPEN WASHING



# SIGNAGE

# DISPLAY REQUIREMENTS



San Diego International Airport

- Iconography
- Must display verbiage “Restroom”
- Must display the symbol of accessibility if restroom is ADA compliant
- Braille translation of display verbiage
- Subtitle description is optional but helpful

# ICONS: ALL GENDER SINGLE-USER



1



2



3



4

# ICONS: FAMILY & MULTI-USER ALL GENDER



1



2



3



4



5

# TITLES

- Restroom
- All Gender Restroom
- Gender Inclusive Restroom
- Gender Neutral Restroom
- Inclusive Restroom
- Universal Restroom
- All User Restroom
- Unisex Restroom
- Water Closet (WC)



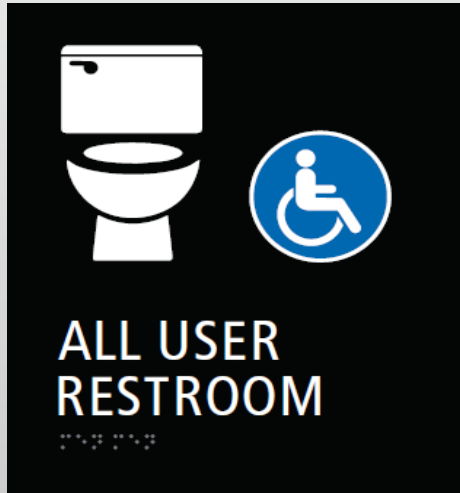
# DESCRIPTION

- No description
- All people may use this restroom
  - All people and families may use this restroom
- All users may use this restroom
  - All users and families may use this restroom
- Anyone can use this restroom
- Anyone can use this restroom, regardless of gender identity or expression

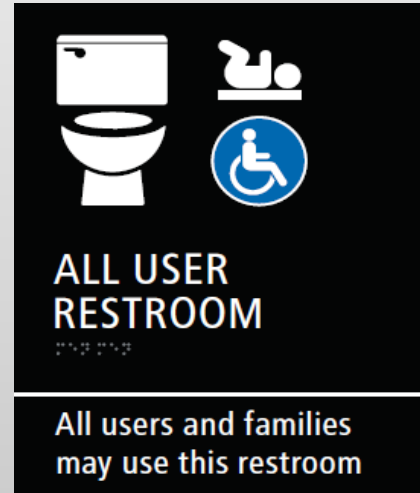




# STAKEHOLDER FEEDBACK



**SINGLE-USER  
AND ADA**



**SINGLE-USER,  
FAMILY AND ADA**